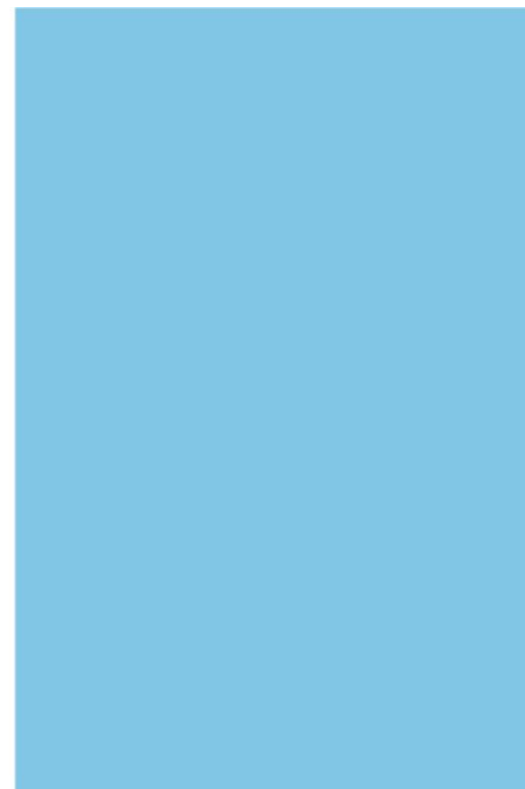


# MUNICIPALITY OF TRNOVO



## Municipality of Trnovo Characteristics



Pre-war border – Municipality of Trnovo 1992

Trnovo FB&H

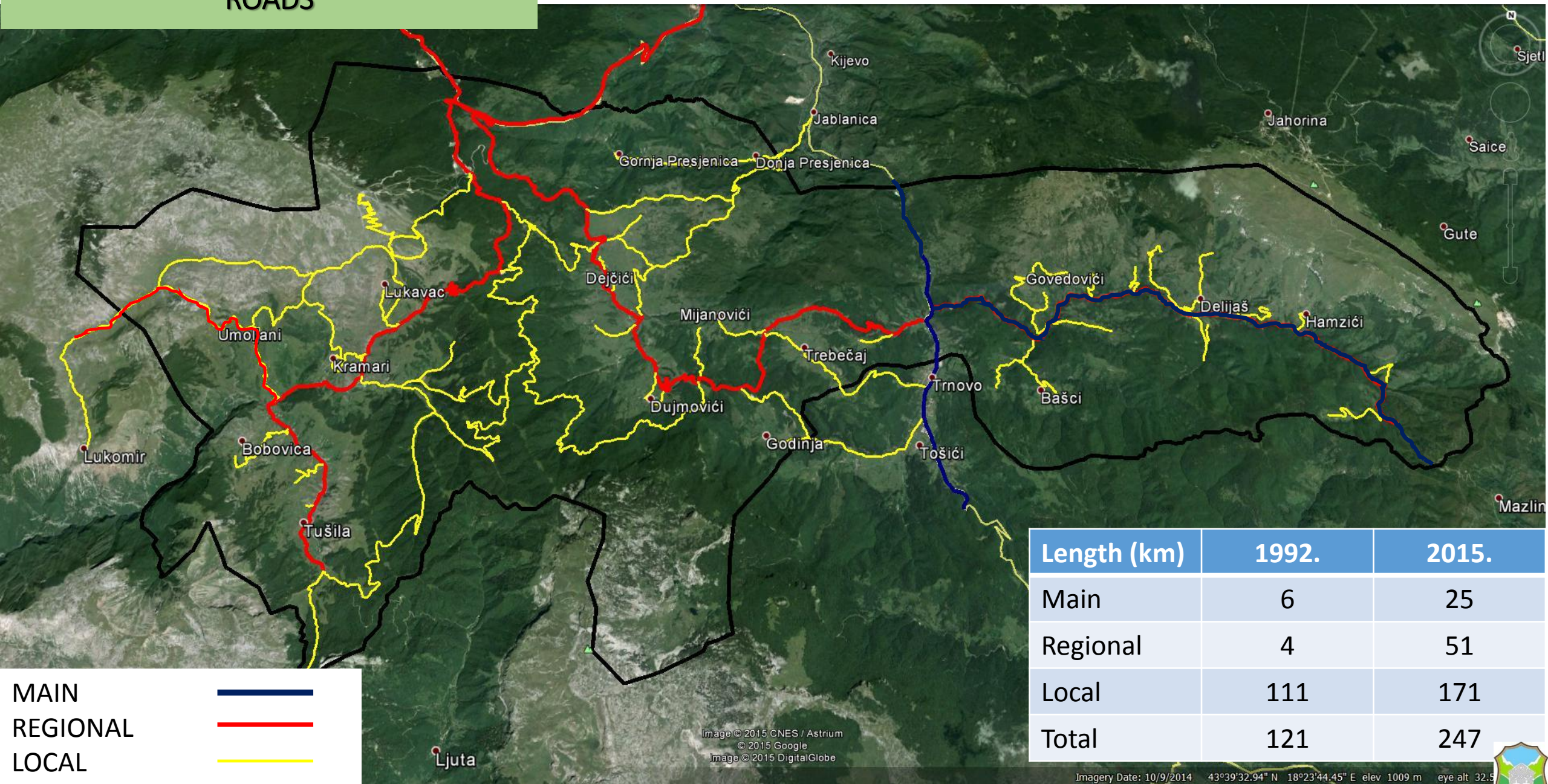
- **Location:** 28 km southeast from Sarajevo;
- **Area:** 337 km<sup>2</sup>;
- **Altitude:** range between 650 and 2080 m above the sea level, average 900 m;
- **Mountains:** Bjelašnica, Igman, Visočica, Treskavica and Jahorina;
- **Rivers:** Željeznica, Rakitnica, Crna Rijeka, Bijela Rijeka, Presjenica, Krsinja;
- **Streams:** Tušiočki, Tovarnički, Lađevac, Bukota, Gučina, Riđan, Duboki, Ledički;
- **Lakes:** Veliko, Malo, Crno, Platno;
- **Climate:** continental climate that with increasing altitude becomes the sharp mountain climate of alpine type;
- *Average monthly rainfall:* 75 do 160 l/m<sup>2</sup>
- *Average number of days under snow:* 126;
- *Population:* 2900;
- 4 local communities
- 56 settlements
- cca 26 000 ha of forests and land under forests
- cca 5900 ha of it belong to pastures and meadows





# Municipality of Trnovo

## ROADS

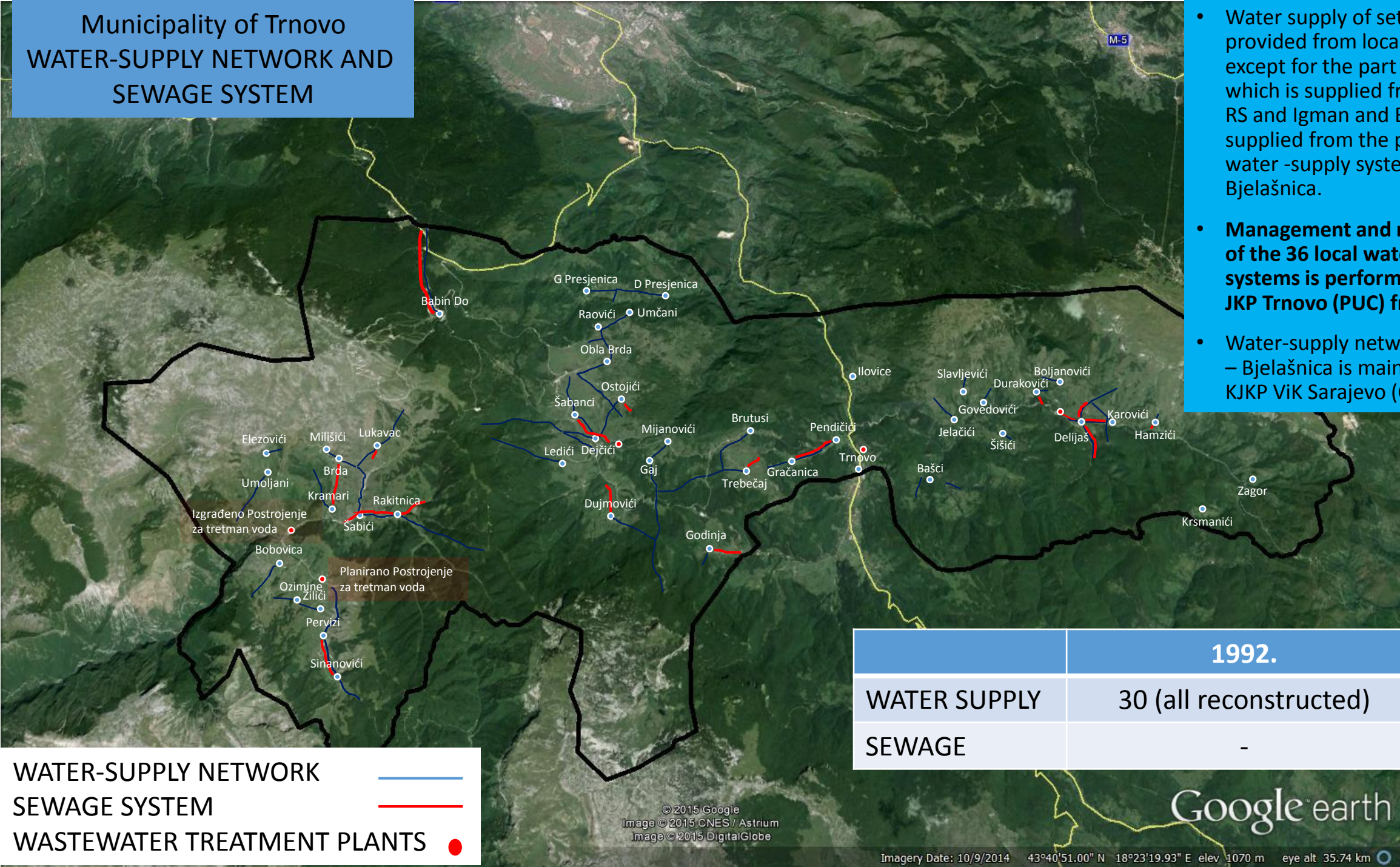


Length (km)	1992.	2015.
Main	6	25
Regional	4	51
Local	111	171
Total	121	247



Municipality of Trnovo  
WATER-SUPPLY NETWORK AND  
SEWAGE SYSTEM

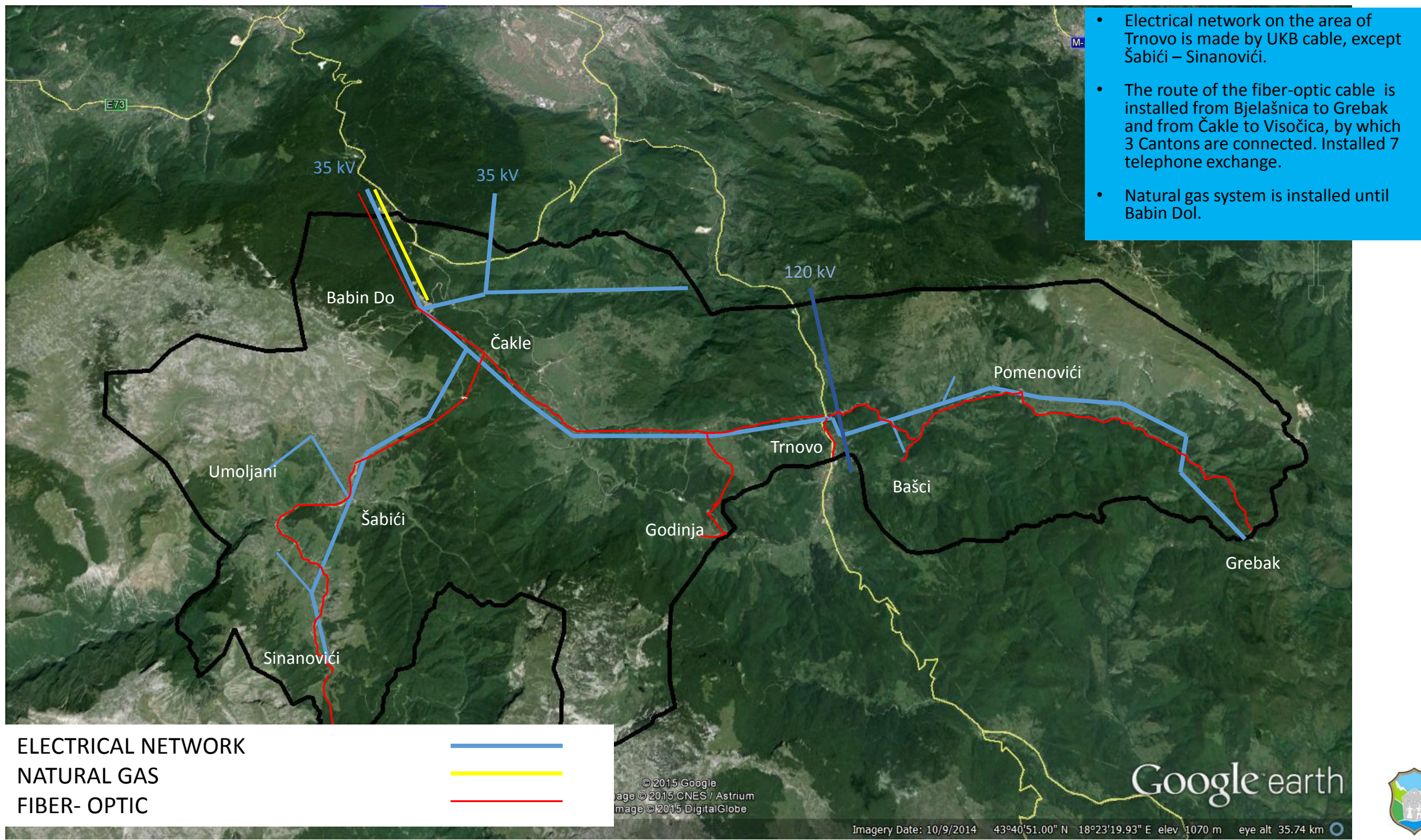
- Water supply of settlements is provided from local springs, except for the part of Trnovo RS and Igman and Bjelašnica supplied from the pumping water -supply system Hrasnica - Bjelašnica.
- Management and maintenance of the 36 local water-supply systems is performed by the JKP Trnovo (PUC) from Trnovo
- Water-supply network Hrasnica – Bjelašnica is maintained by KJKP ViK Sarajevo (CPUC)



	1992.	2015.
WATER SUPPLY	30 (all reconstructed)	43
SEWAGE	-	21

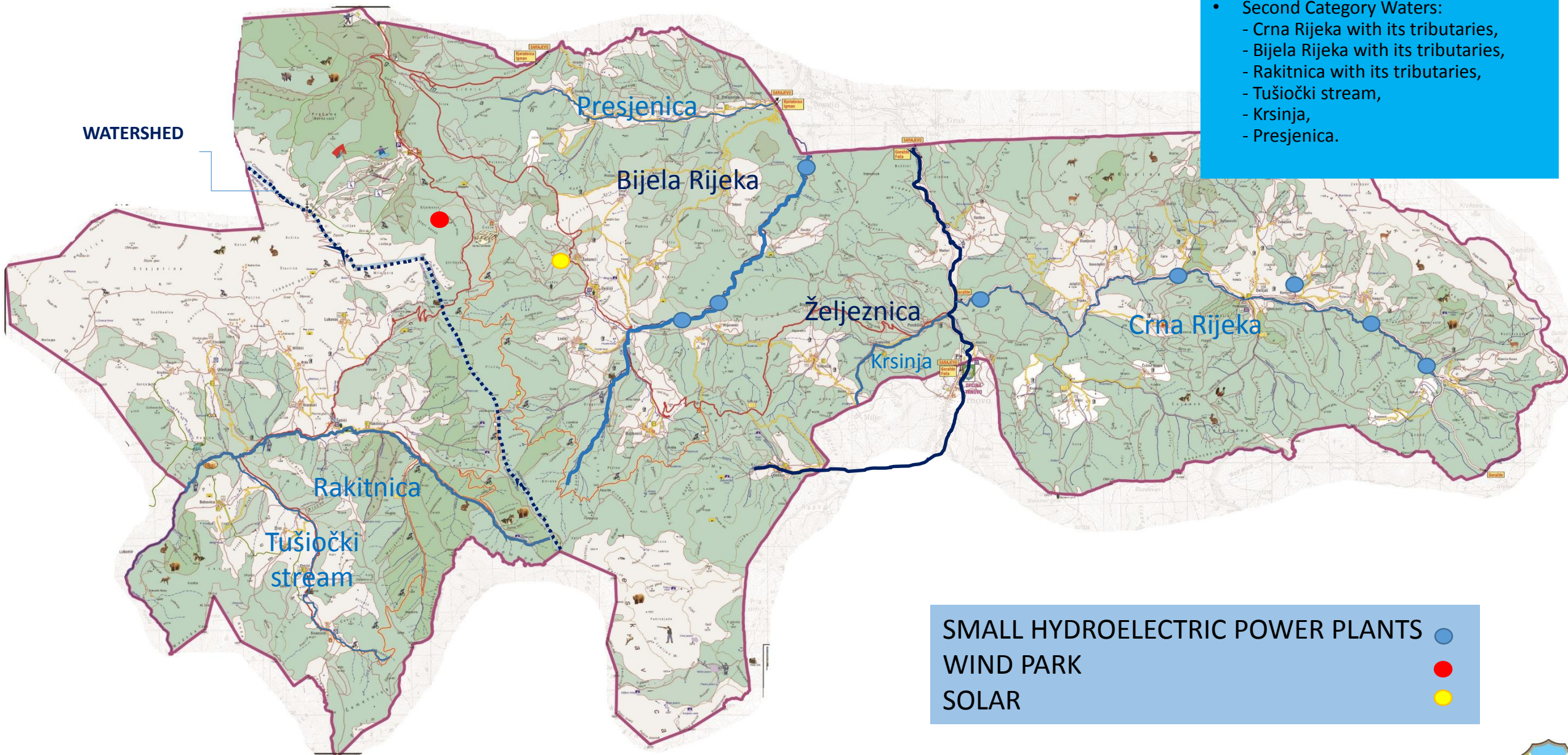








# WATER RESOURCES, WIND AND SOLAR

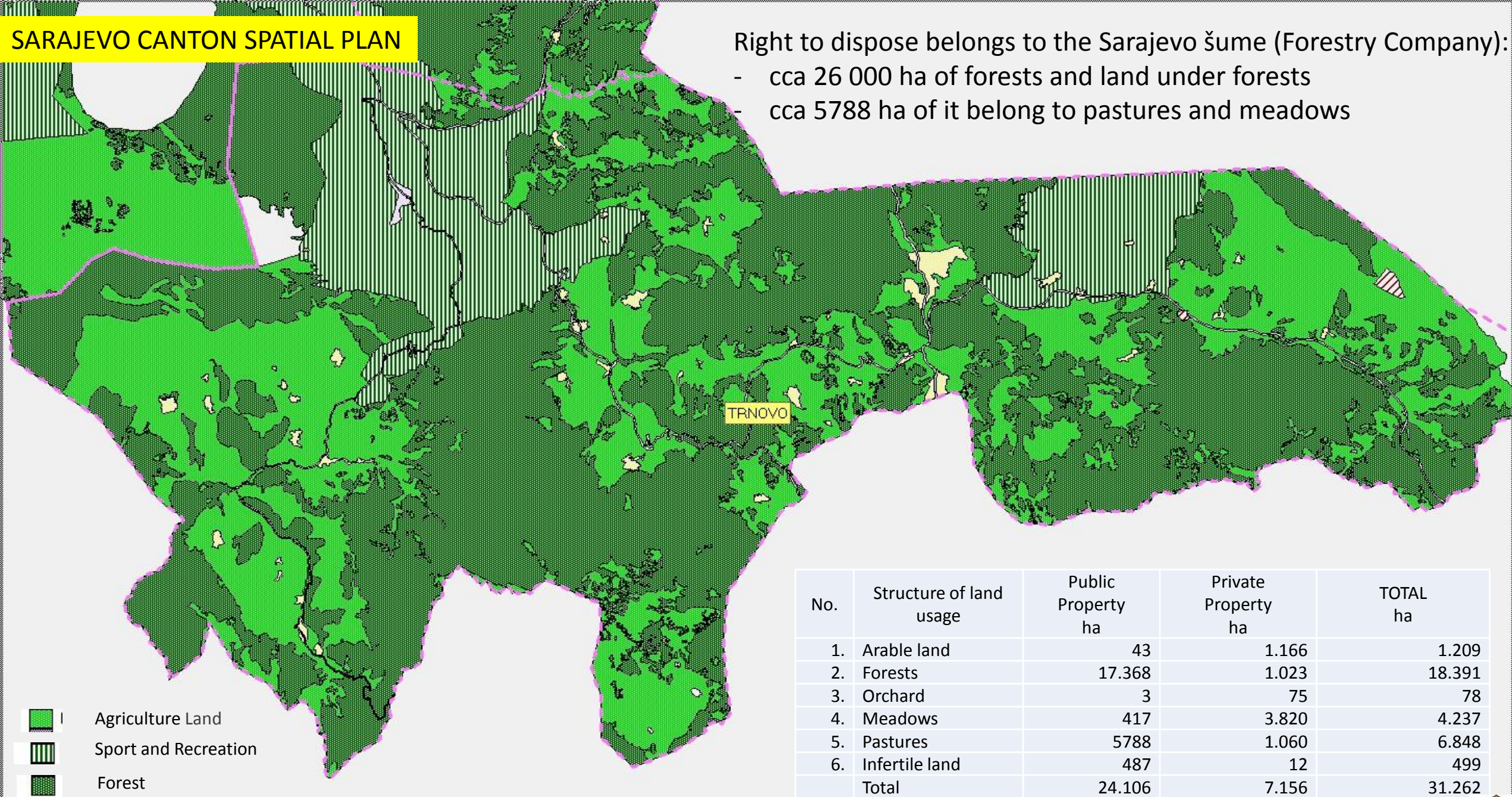




SARAJEVO CANTON SPATIAL PLAN

Right to dispose belongs to the Sarajevo šume (Forestry Company):

- cca 26 000 ha of forests and land under forests
- cca 5788 ha of it belong to pastures and meadows

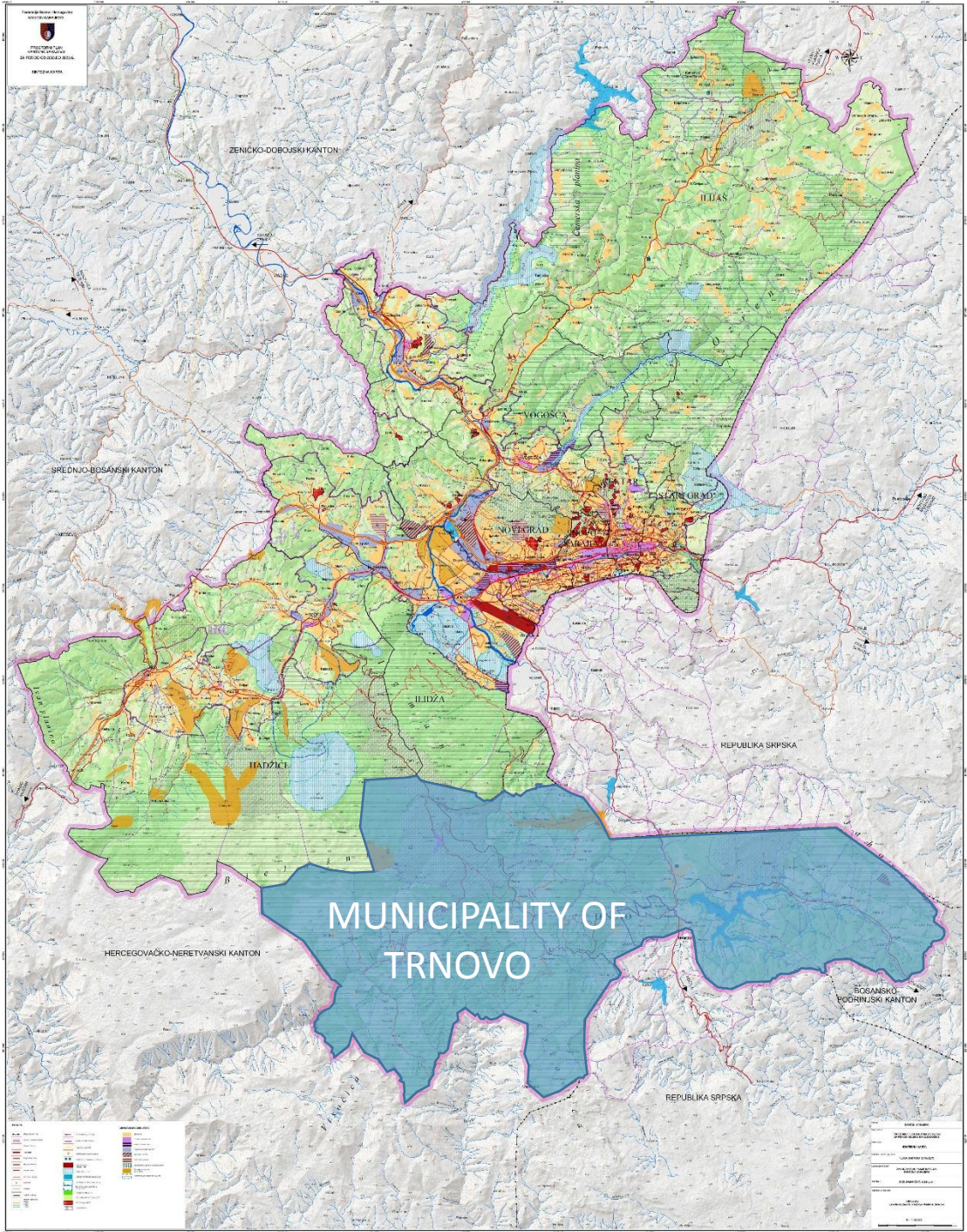


No.	Structure of land usage	Public Property ha	Private Property ha	TOTAL ha
1.	Arable land	43	1.166	1.209
2.	Forests	17.368	1.023	18.391
3.	Orchard	3	75	78
4.	Meadows	417	3.820	4.237
5.	Pastures	5788	1.060	6.848
6.	Infertile land	487	12	499
	Total	24.106	7.156	31.262



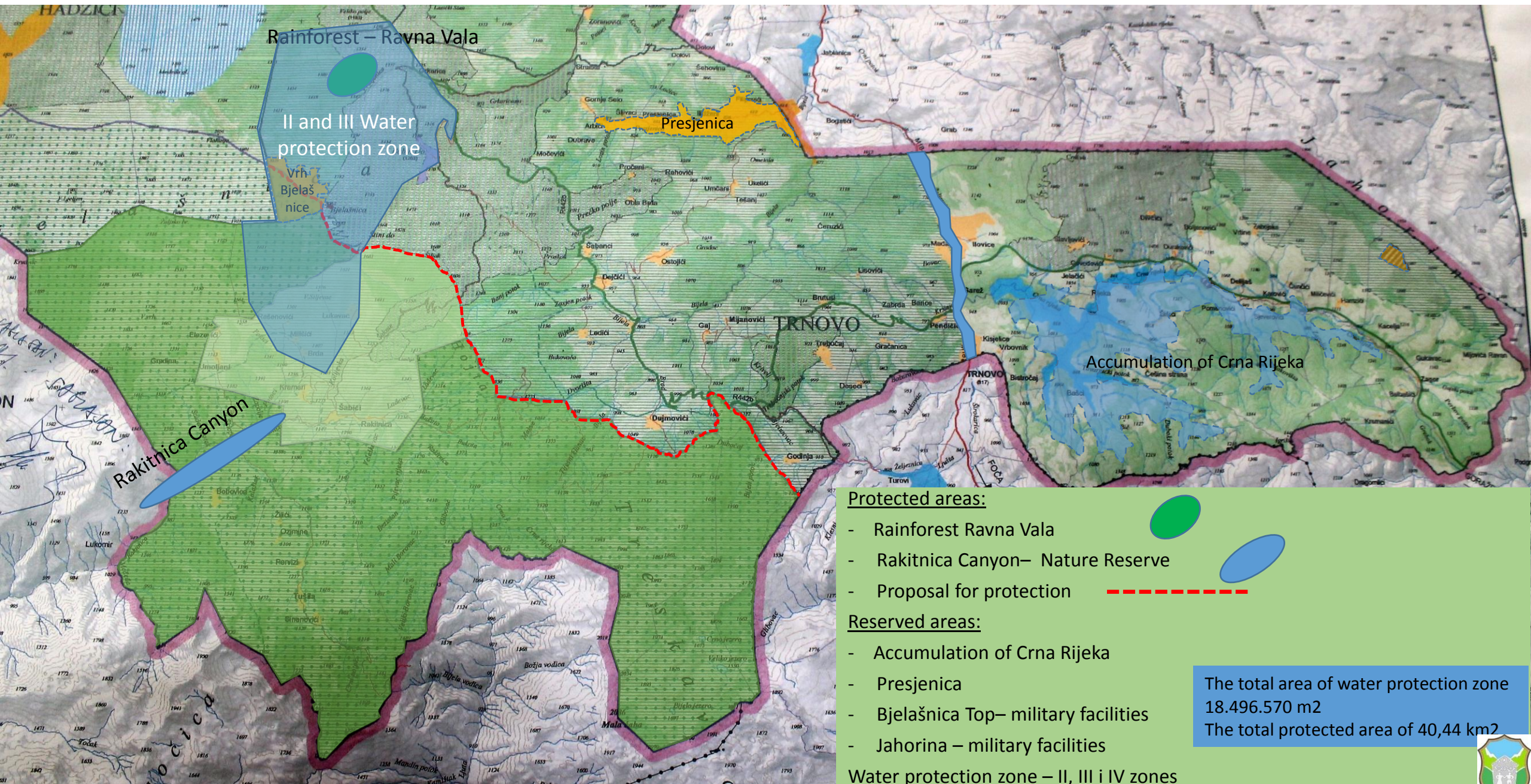


# SARAJEVO CANTON SPATIAL PLAN





# SARAJEVO CANTON SPATIAL PLAN– PROTECTED AND RESERVED AREAS



## Protected areas:

- Rainforest Ravna Vala
- Rakitnica Canyon– Nature Reserve
- Proposal for protection

## Reserved areas:

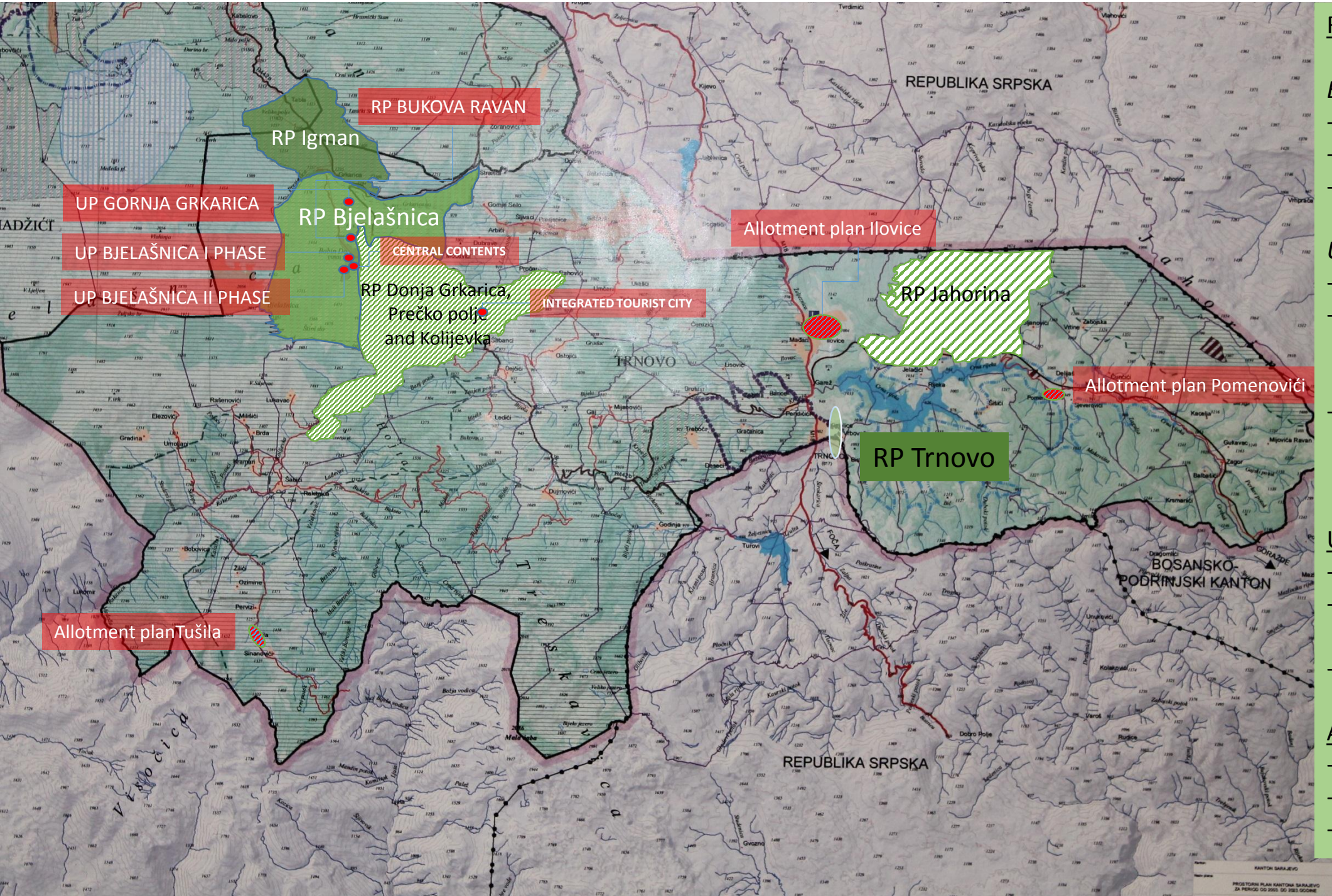
- Accumulation of Crna Rijeka
- Presjenica
- Bjelašnica Top– military facilities
- Jahorina – military facilities

Water protection zone – II, III i IV zones

The total area of water protection zone  
18.496.570 m<sup>2</sup>  
The total protected area of 40,44 km<sup>2</sup>







## REGULATORY PLANS

### *Existing:*

- RP Igman
- RP Bjelašnica
- RP Trnovo

### *Under construction:*

- RP Jahorina
- RP Donja Grkarica, Prečko polje and Kolijevka
- Amendments and supplements to the RP Bukova ravan

## URBAN PROJECTS

- UP Bjelašnica I Phase
- UP Bjelašnica II Phase
- UP Gornja Grkarica

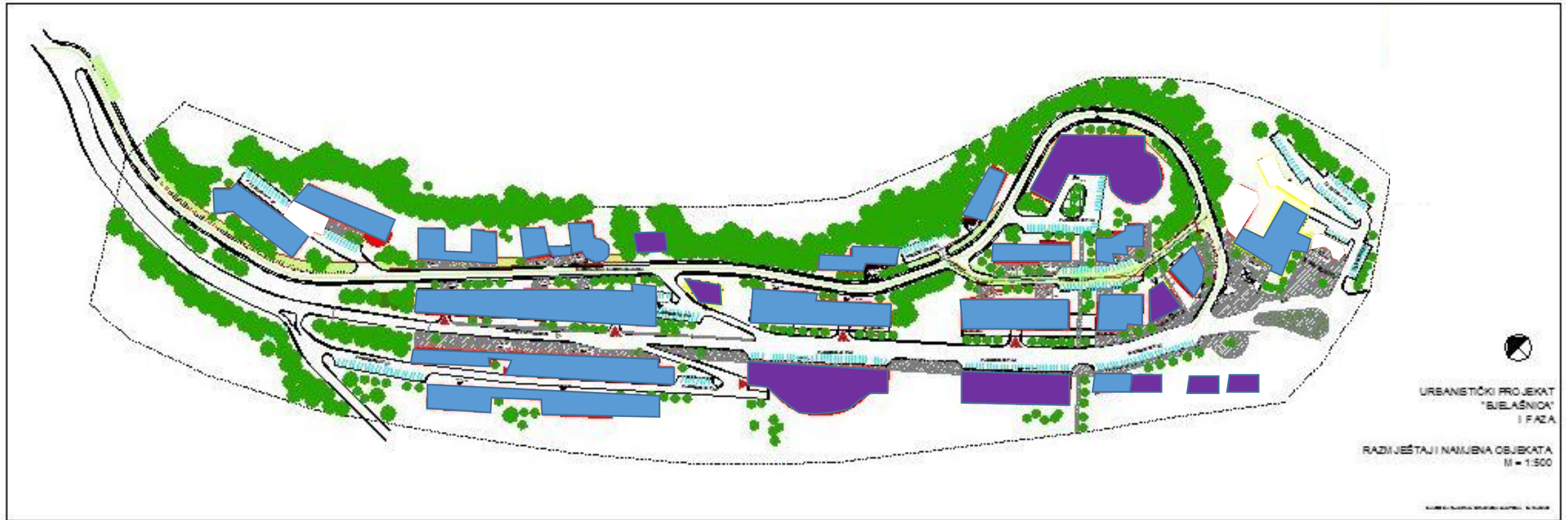
## ALLOTMENT PLAN

- AP Pomenovići
- AP Tušila
- AP Ilovice





# UP Bjelašnica I Phase



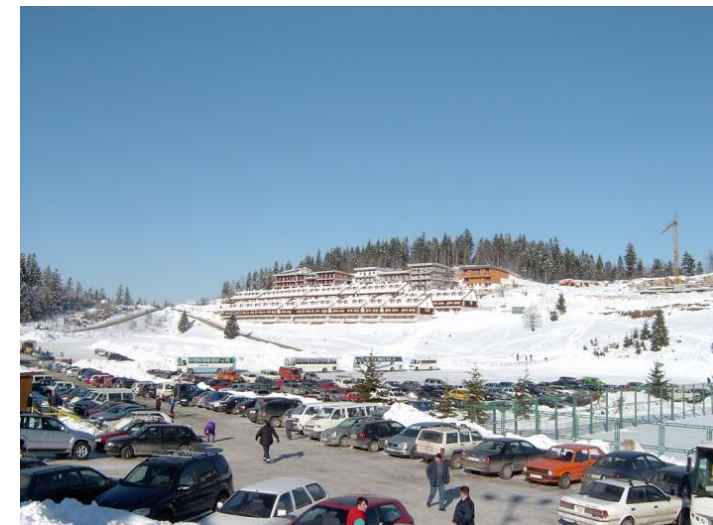
EXISTING  
UNDER CONSTRUCTION





# *UP Bjelašnica I Phase – existing objects*

- Hotel “Maršal” – 220 beds,
- Hotel “Han” – 36 beds,
- “Bosnalijek” apartments– 297 beds,
- “Unioninvest” apartments– 231 beds,
- “Bajsik” apartments– 84 beds,
- “Tehel” apartments– 78 beds,
- “Mušinović” apartments– 132 beds,
- Hotel “Mušinović” – 200 beds,
- “Oki” apartments– 220 beds,
- “EGV” apartments– 78 beds,
- “Đozić” apartments– 150 beds,
- “Panorama sole” apartments– 57 beds
- ***TOTAL 1783 BEDS***













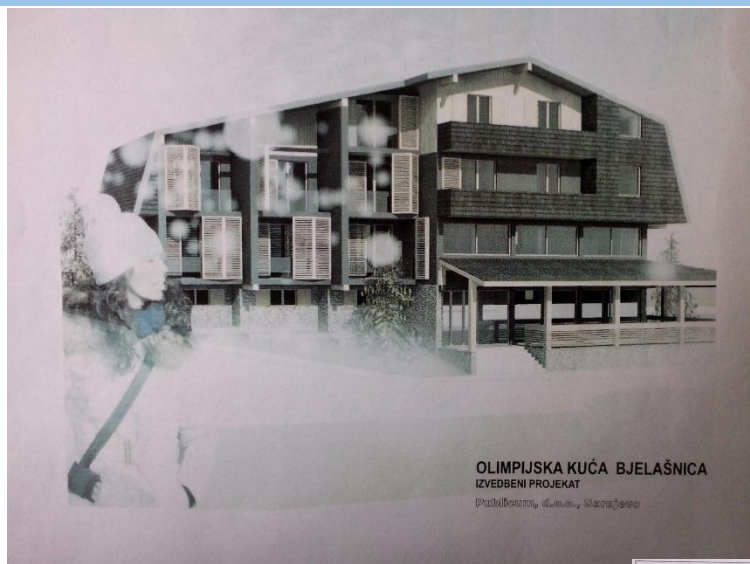
# UP Bjelašnica I Phase - planned

- Within the scope of UP Bjelašnica I phase in 2015 in order to increase the accommodation capacity following projects will be realized:
  - Enlargement of the Hotel “ Han” – (new construction mark– corrections)
  - Construction of the Hotel- Apartment “Samgrad”.
  - MOC – resolution of property issues between ZOI and Bosnalijek.
  - Olympic house – property of ZOI 84
  - “ Harysco” apartment- not constructed
  - Garage with accommodation capacities- (new construction mark– corrections )
  - Construction of “ Ajanović” Apartment
- NON - MOVING TRAFFIC PROBLEM





# UP Bjelašnica I Phase - planned





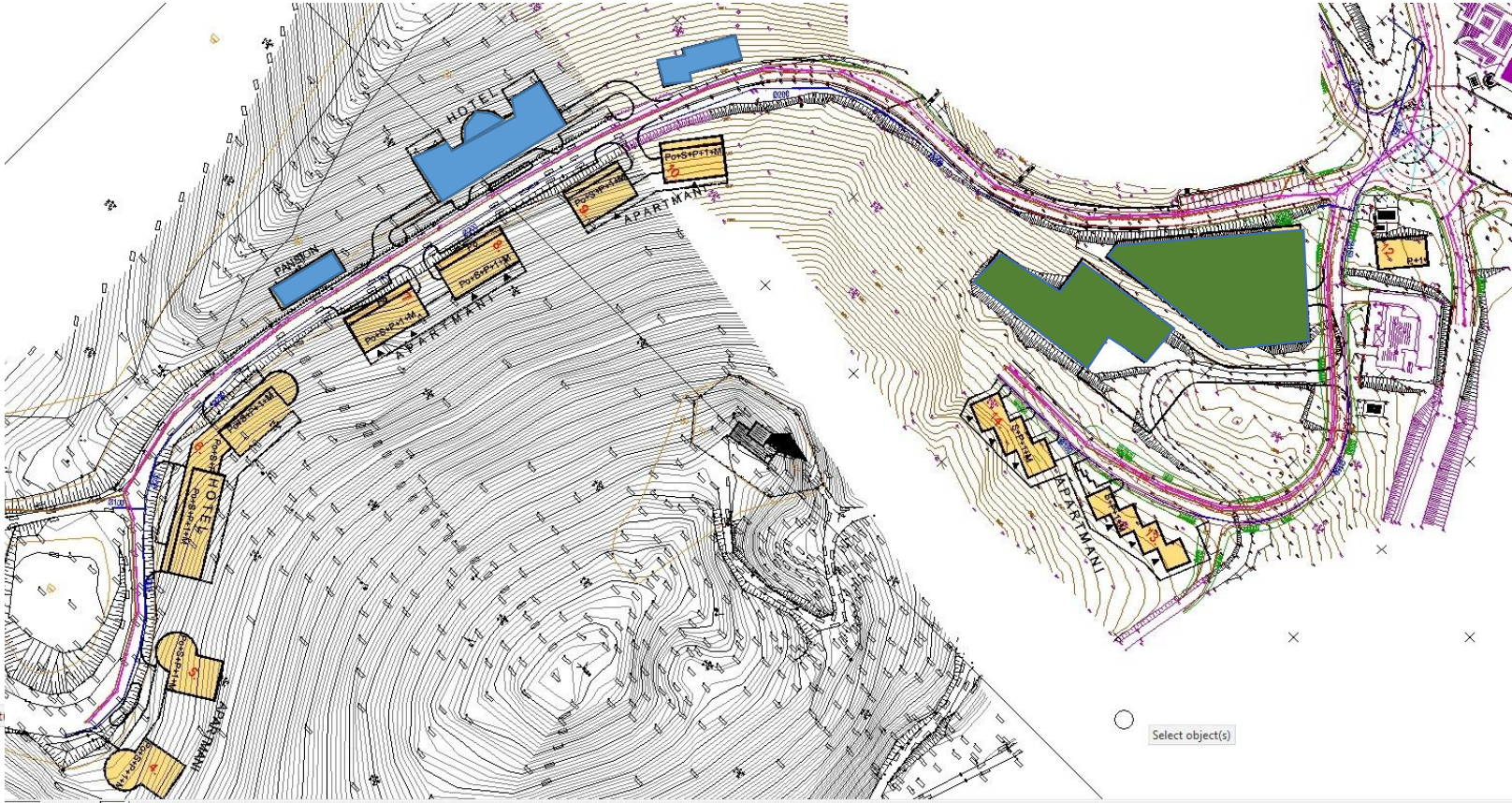
*UP BJELAŠNICA II  
PHASE  
- Adopted UP-*





# UP BJELAŠNICA II PHASE

BJELAŠNICA FAZA II					
BILANS POVRŠINA - PLANIRANI SARDŽAJ					
Redni br.	Namjena objekta	Spratnost	Ukupno BGP (m <sup>2</sup> )	Broj ležaja	Broj apartmana
1	Dječije odmaralište	Po+S+P+M	990	50	/
2	Hotel	S+P+1+M	3480	120	/
3	Pansion	S+P+M	750	40	/
4	Apartmani	Po+S+P+1+M	1880	/	28
5	Apartmani	Po+S+P+1+M	1880	/	28
6	Hotel	Po+S+P+1+M	4340	180	/
7	Apartmani	Po+S+P+1+M	1920	/	30
8	Apartmani	Po+S+P+1+M	1920	/	30
9	Apartmani	Po+S+P+1+M	1600	/	24
10	Apartmani	Po+S+P+1+M	1600	/	24
11					
12	Pansion	P+1	480	16	/
13	Apartmani	S+P+1+M	1200	/	28
14	Apartmani	S+P+1+M	1296	/	24
15					
16					
17					
18					
19	Hotel "SMUK"	S+P+2+M	3520	100	/
20	Hotel "SMUK"	S+P+2+M	3240	100	/
21	Hotel "SMUK" depadens hotela Smuk sa apartmanima	S+P+1+M	3780	40	/
UKUPNO:			33876	646	216

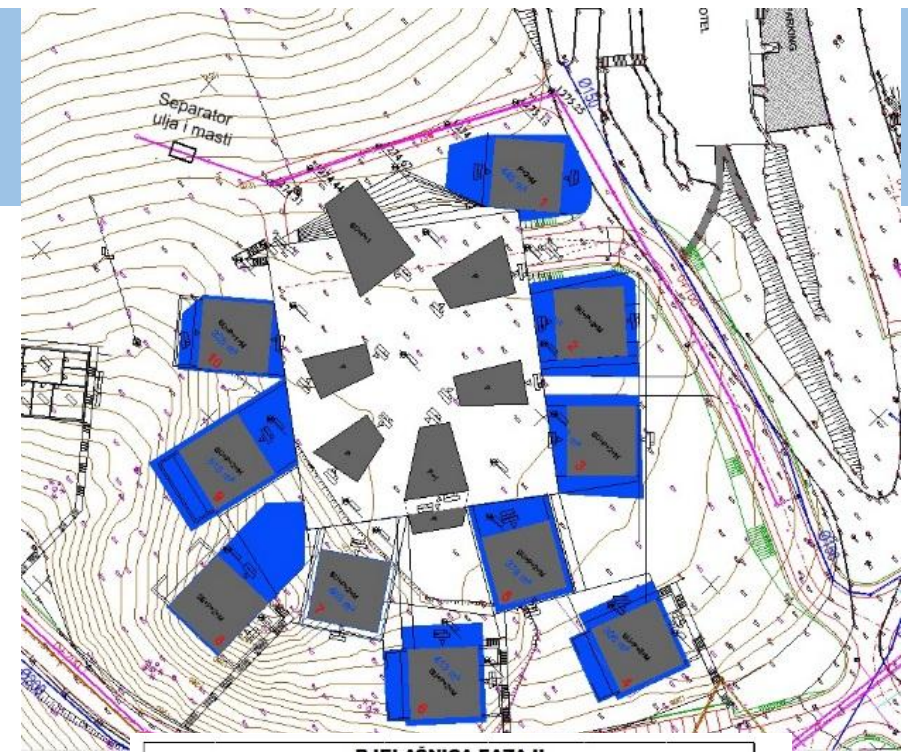
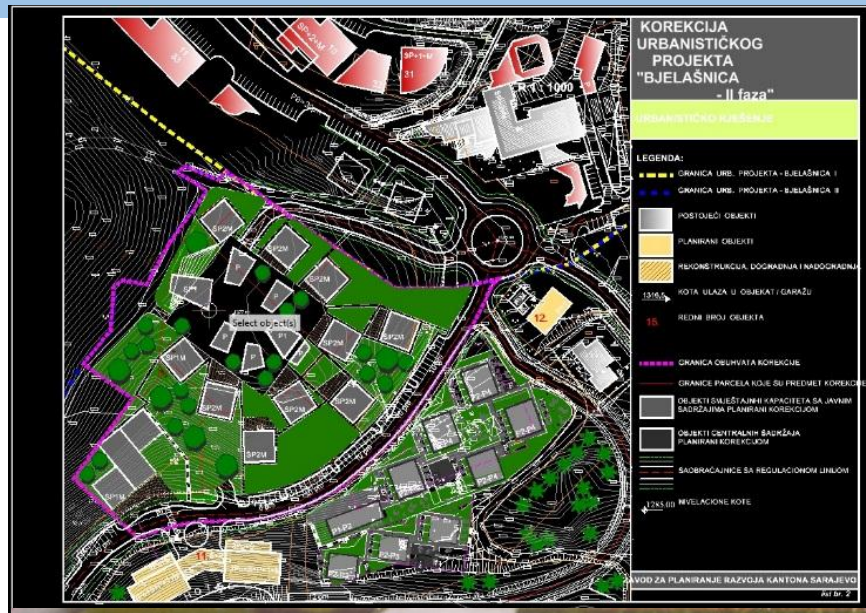


NON- MOVING TRAFFIC PROBLEM





# Central Facilities



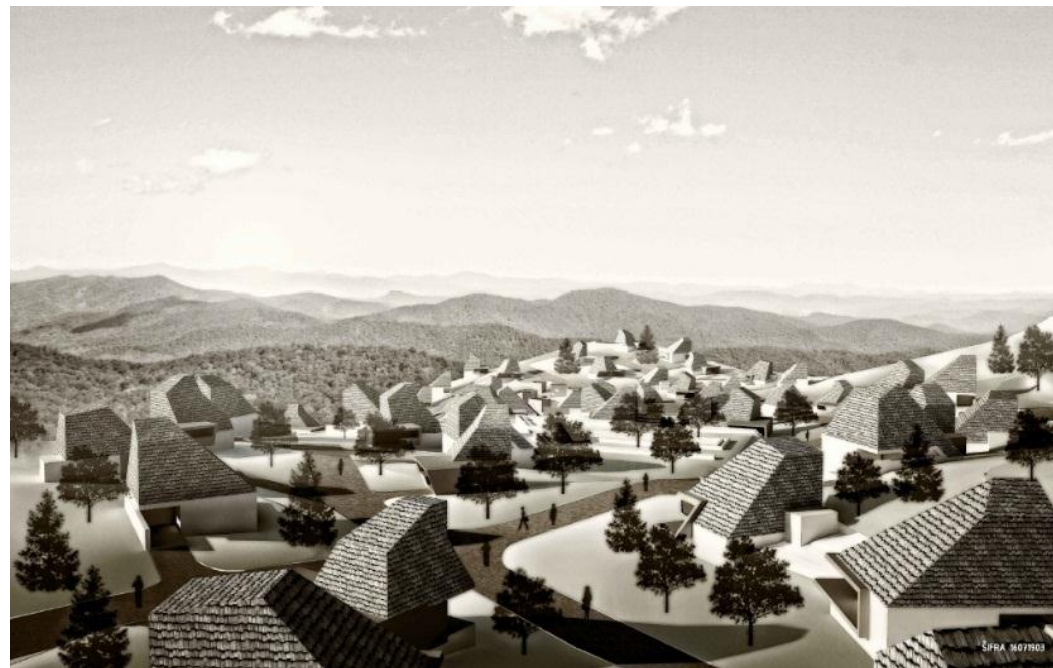
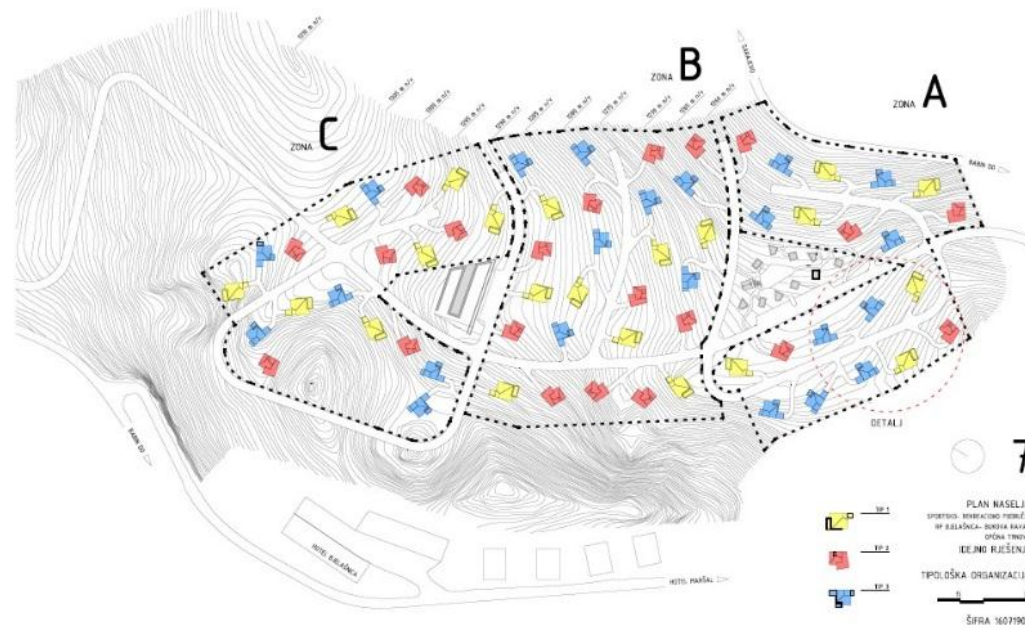
BJELAŠNICA FAZA II					
BILANS POVRŠINA - CENTRALNI PLANIRANI SADRŽAJ					
Redni br.	Namjena objekta	Spratnost	Ukupno BGP (m2)	Broj ležaja	Broj apartmana
1	Pansion sa javnim sadržajem	P+2+M	650	/	12
2	Pansion sa javnim sadržajem	SU+P+2+M	1275	/	12
3	Pansion sa javnim sadržajem	SU+P+2+M	812	/	12
4	Pansion sa javnim sadržajem	SU+P+2+M	1098	/	12
5	Pansion sa javnim sadržajem	SU+P+2+M	1108	/	12
6	Pansion sa javnim sadržajem	SU+P+2+M	1042	/	12
7	Pansion sa javnim sadržajem	SU+P+2+M	Select object(s)	/	12
8	Pansion sa javnim sadržajem	SU+P+2+M	1563,9	/	12
9	Pansion sa javnim sadržajem	SU+P+2+M	1322	/	12
10	Pansion sa javnim sadržajem	SU+P+2+M	798	/	12
11	Garaža + javni sadržaj	SU+P	3288	/	/
12	Hotel + apartmani	SU+P+1+M	2263	65	/
UKUPNO:			16083,9	65	120





## Amendments and supplements to the RP SRC Bjelašnica - Bukova ravan

- Adopted Decision on Amendments and supplements to the RP SRC Bjelašnica
- Conducted a tender for the best architectural design and the same will be incorporated in the draft plan
- The planned coverage area of 10 ha
- The construction of 84 cottage objects
- 16 business units
- Total net area 10.700 m<sup>2</sup>





# Urban Project Gornja Grkarica

## - summer offer-

- The planned coverage area of 35,6 ha
- Planned construction
  - Summer activities
  - Ergel
  - Mini golf area with restaurant
  - Football, handball, tennis and bowling area
  - Playgrounds
  - Biking and horseback riding paths
- It is necessary to perform correction of Plan in order to expand accommodation capacities

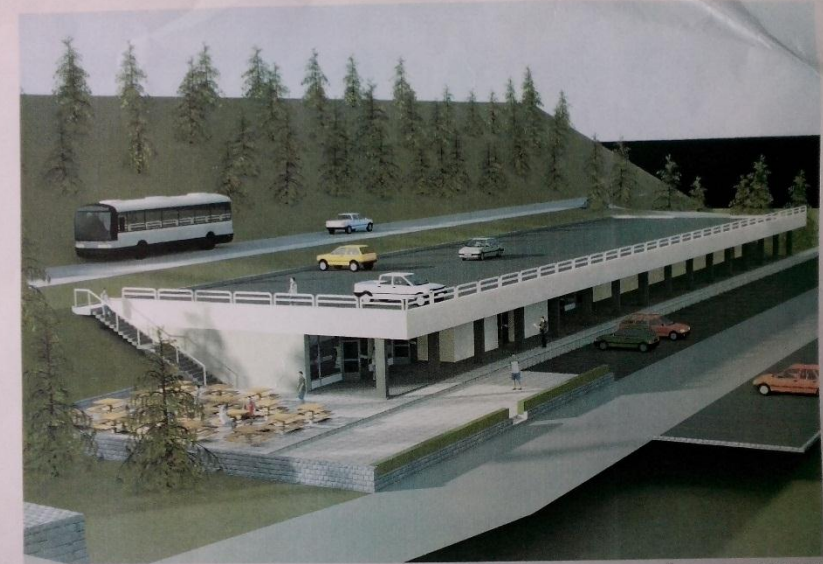
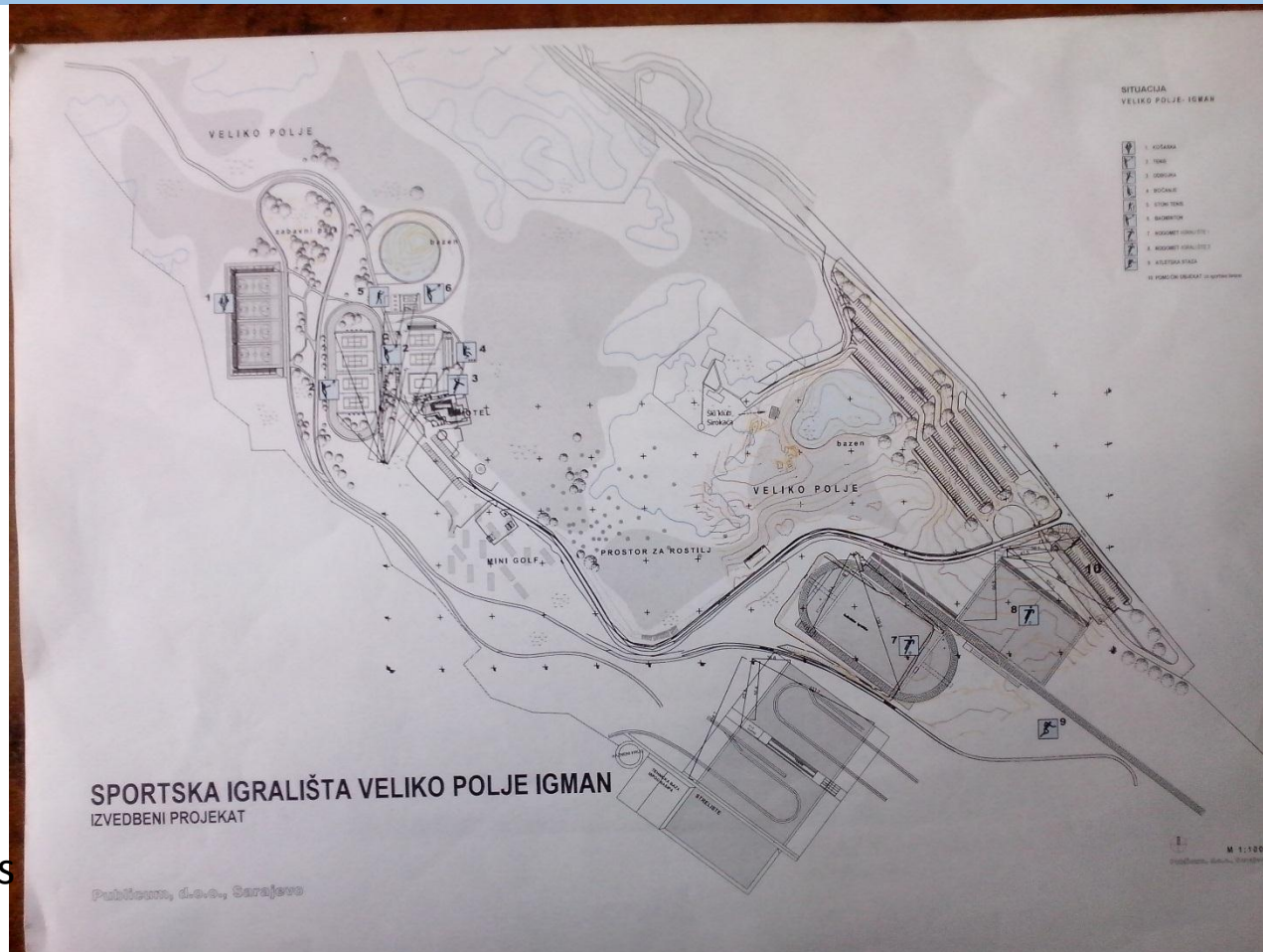








# RP IGMAN – summer offer





# CONCEPT OF EXPANSION OF WINTER CENTER



- Total planned coverage area of 900 ha
- Within the expansion scope construction of following is planned:
  - 5 trails for Alpine skiing
  - 2 ski-lifts and vertical transportation lift
  - construction of the starting point with parking, eco-ethno village with necessary facilities
- Rising ski center at 1600 m:
  - construction of new roads
  - installation of water, electricity, sewage and natural gas network inside roads
- Water supply and snowmaking





RAZVOJNI PLAN SPORTSKOREKREATIVNOG  
CENTRA BJELOŠNIKA – IGMAN

MAŠTAB: 1 : 5000

LEGENDA:

- SAOBRAĆAJ
- STAZE POSTOJEĆE
- STAZE NOVE
- OBJEKTI
- USPINJAČE
- VODOVODNIŠKILACIJE
- SPORTNE PLOŠTINE
- AUTO KAMP

STROŠCI ARHITEKTURA:  
PROJEKTOVANJE: VUKOBRAT VUKOVIĆ  
IZRAĐIO: BORISLAV SELANOVIC

NEW SKI  
KOTLOVI – CRNI VRH

BABIN DO INTERSTATION ROAD

Šiljak

Gojčinova ravan

Jarčev kamen

Donja Grkarica





## Vertical transportation

- Ski-lift Štini Do - Šiljak L=1100 m
- Cable car Donja Grkarica - Šiljak L=1740 m
- Ski-lift Jarčev kamen - Gojčinova ravan L=720 m

## Ski Runs

- Ski Run Šiljak Top-Štini Do L=1250 m
- 2 ski runs Šiljak Top – Donja Grkarica  
 $L_1=2200$  m i  $L_2=1900$  m
- 2 ski runs Gojčinova ravan – Jarčev kamen  
 $L_1=780$  m i  $L_2=730$  m



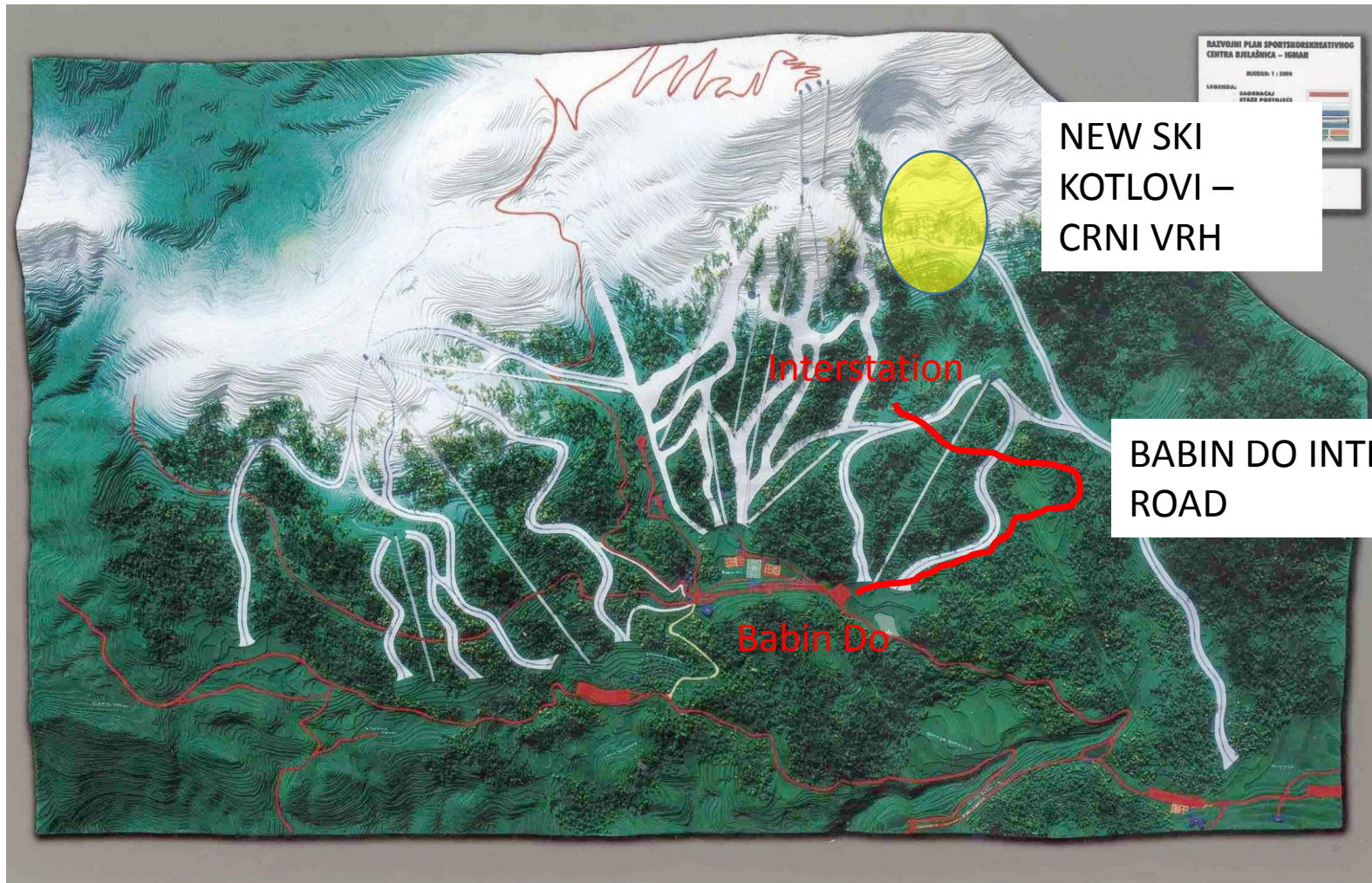






# AREA BETWEEN KOTLOVI AND CRNI VRH

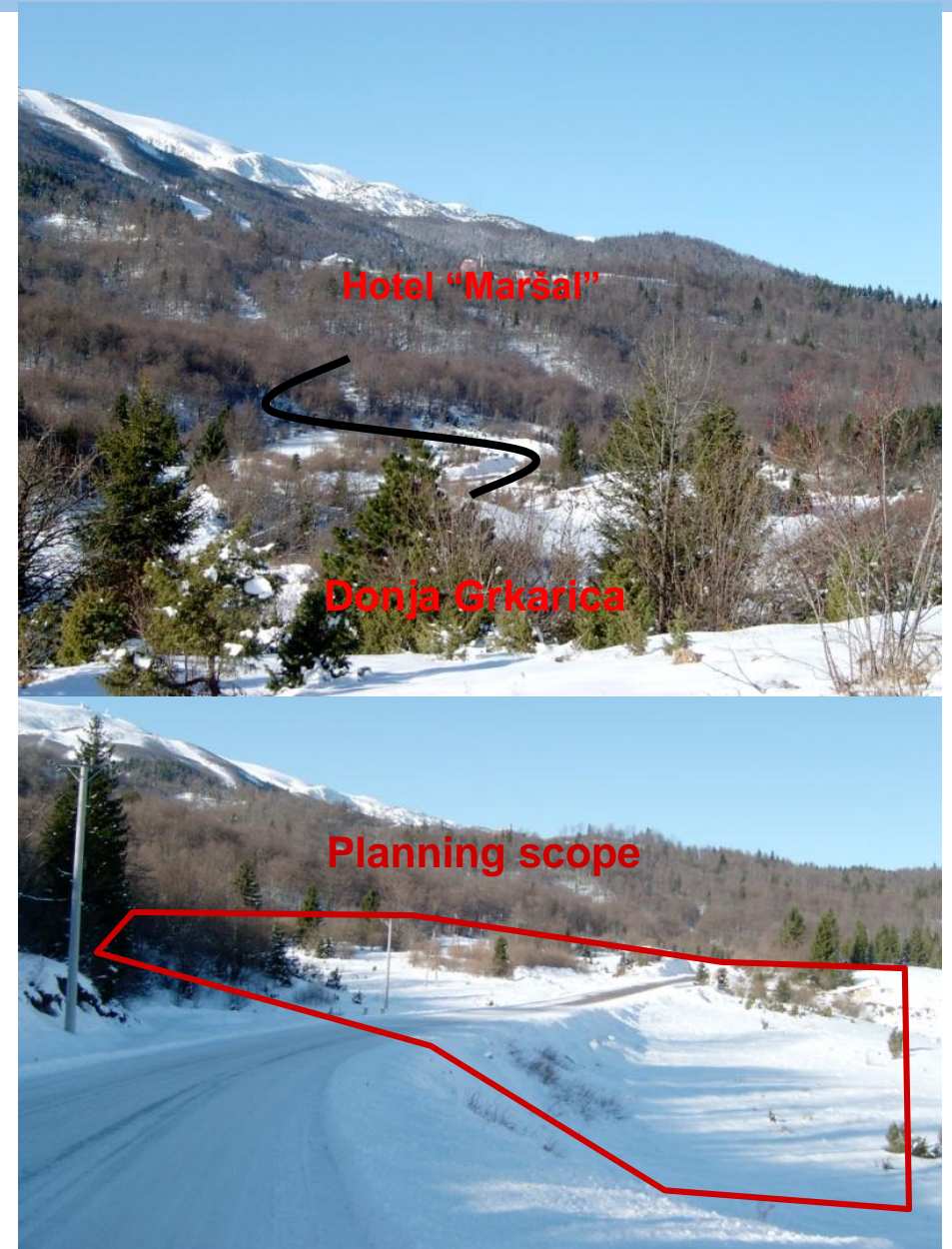
RISING SKI CENTER AT 1560M





## *Scope of future urban project on the location of Donja Grkarica*

- Connection with the existing center by construction of bypass with roundabout circulation
- The coverage area of 20 ha
- The planned construction of the starting point with parking space, eco-ethno village with necessary facilities





# Water supply and snowmaking project

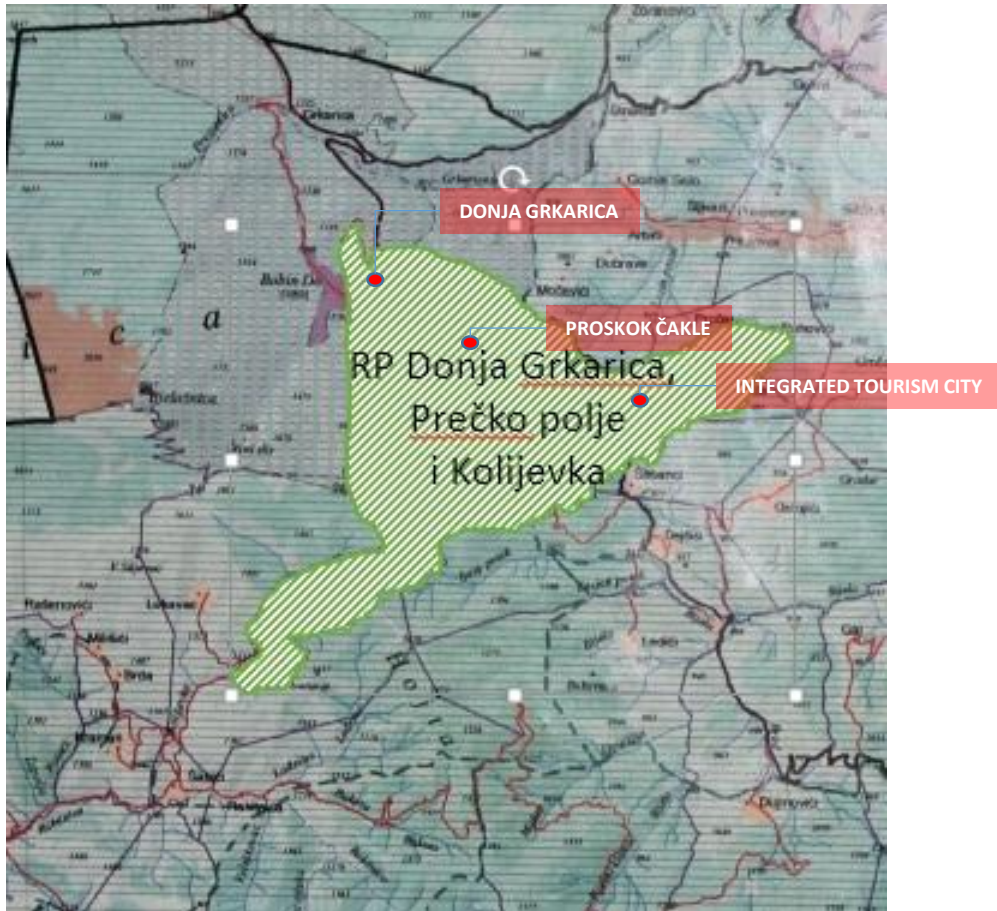


- Prepared and revisited main water supply project from Pršetak to Babin Dol and from Čakle to Gornja Grkarica
- To prepare project for snowmaking from Babin Do reservoir to Šiljak reservoir and from Šiljak until accumulation next to the ski runs
- To prepare project for the part of water - supply network from Duganja until Prečko polje in order to provide water supply into Integrated Tourist City in Prečko polje





# *RP Donja Grkarica, Prečko Polje, Kolijevka*



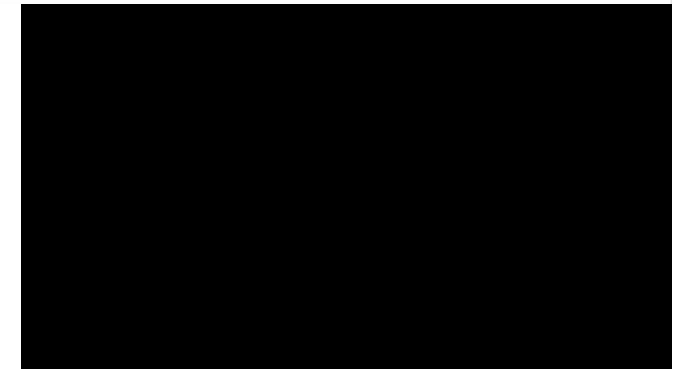
- Brought Decision on preparation of RP Donja Grkarica, Prečko Polje, Kolijevka;
- Declared a general interest for the construction of the Integrated Tourist City
- Public Announcement
- Together with the Ministry of Economy solve exclusion and transformation of forest land into construction land
- Possibility of 2 years payment for expropriated land
- KM 2 millions planned in Budget for property issues
- Planning KM 2 million loan or credit for resolution of property issues necessary for construction of Integrated Tourist City
- Prepared Decision on accesion for construction of RP Čakle;
- Together with the Ministry of Veterans' Affairs initiate preparation of Regulatory Plan of Memorial Park Proskok





# Construction of Integrated Tourist City

- Planned coverage area of 120 ha
- Planned construction of: hotels, apartments, villas, shopping malls, health center and additional infrastructure
- Investment of 920 000 000 EUR
- The value of the completed project 4 billion EUR



VIDEO BUROJ OZONE





# RP Čakle

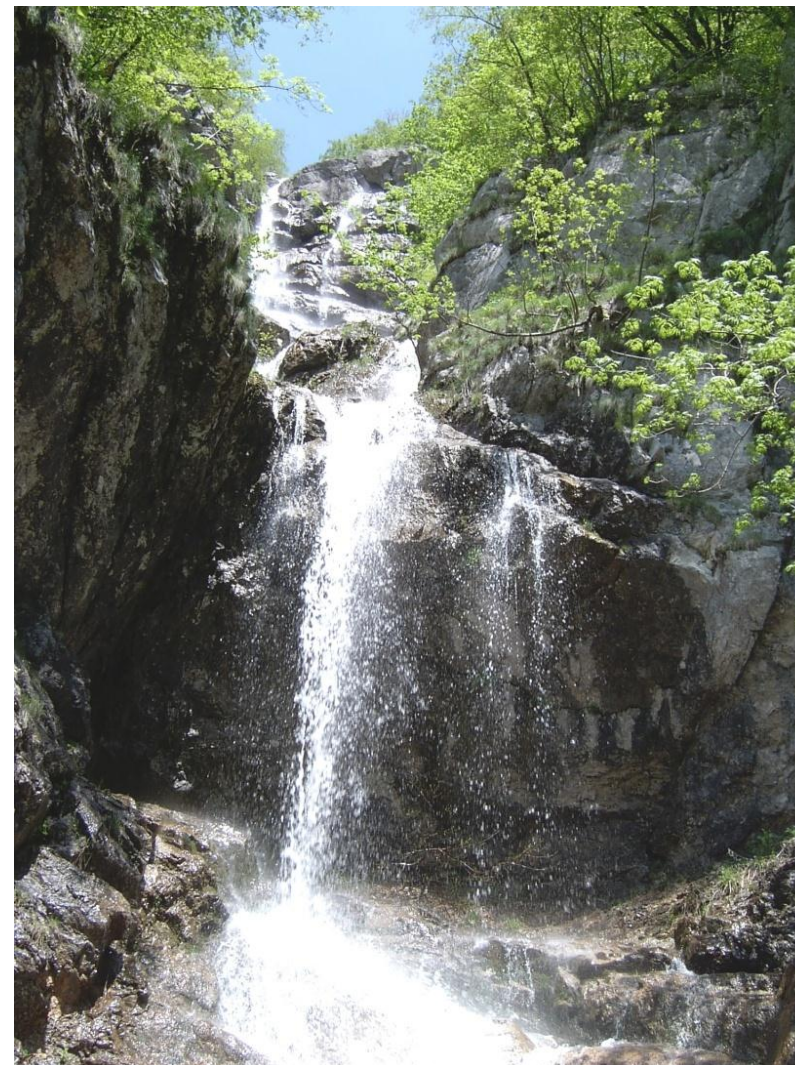
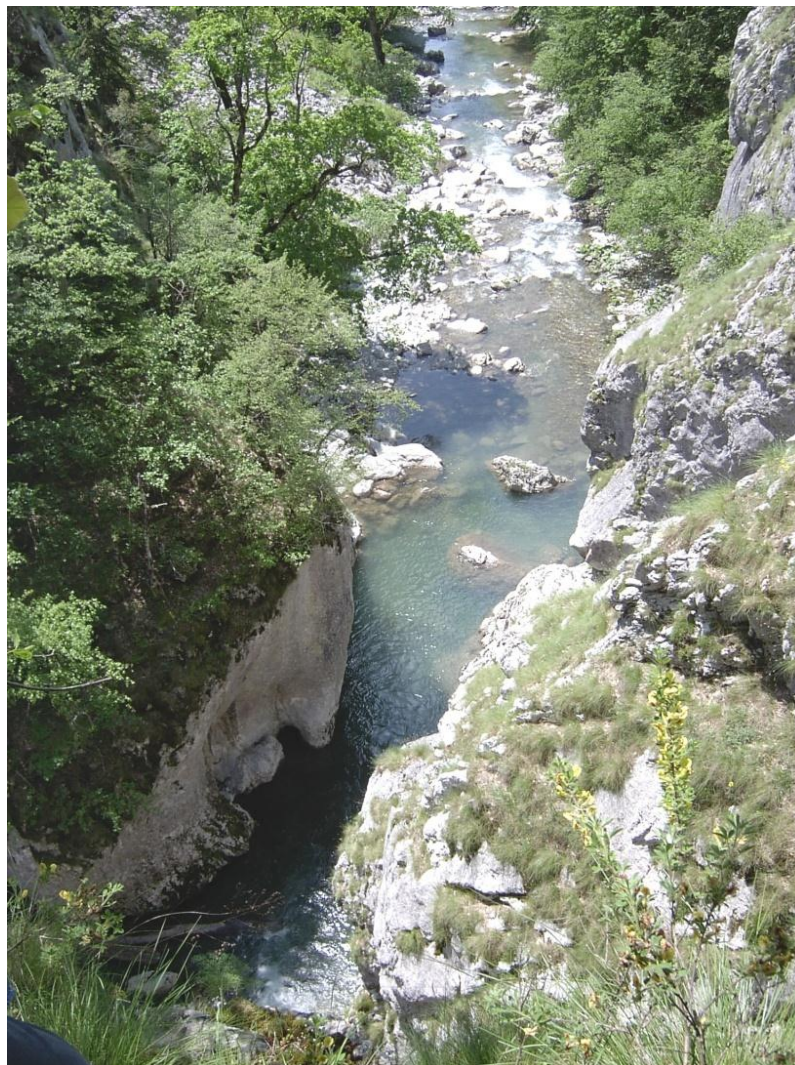
- Prepared Decision on preparation of Regulatory Plan
- Planned coverage area of 46,7 ha





## *Canyon of Rakitnica as a tourist attraction*

- The greatest potential for tourism in the Sarajevo Canton
- Meetings with the Governments of FB&H and Sarajevo Canton in order to list Canyon of Rakitnica in the tourist offer
- Sarajevo Canton and Municipality of Trnovo should launch an initiative to the Government of the FB&H for approval for the preparation of proposal on construction of paths

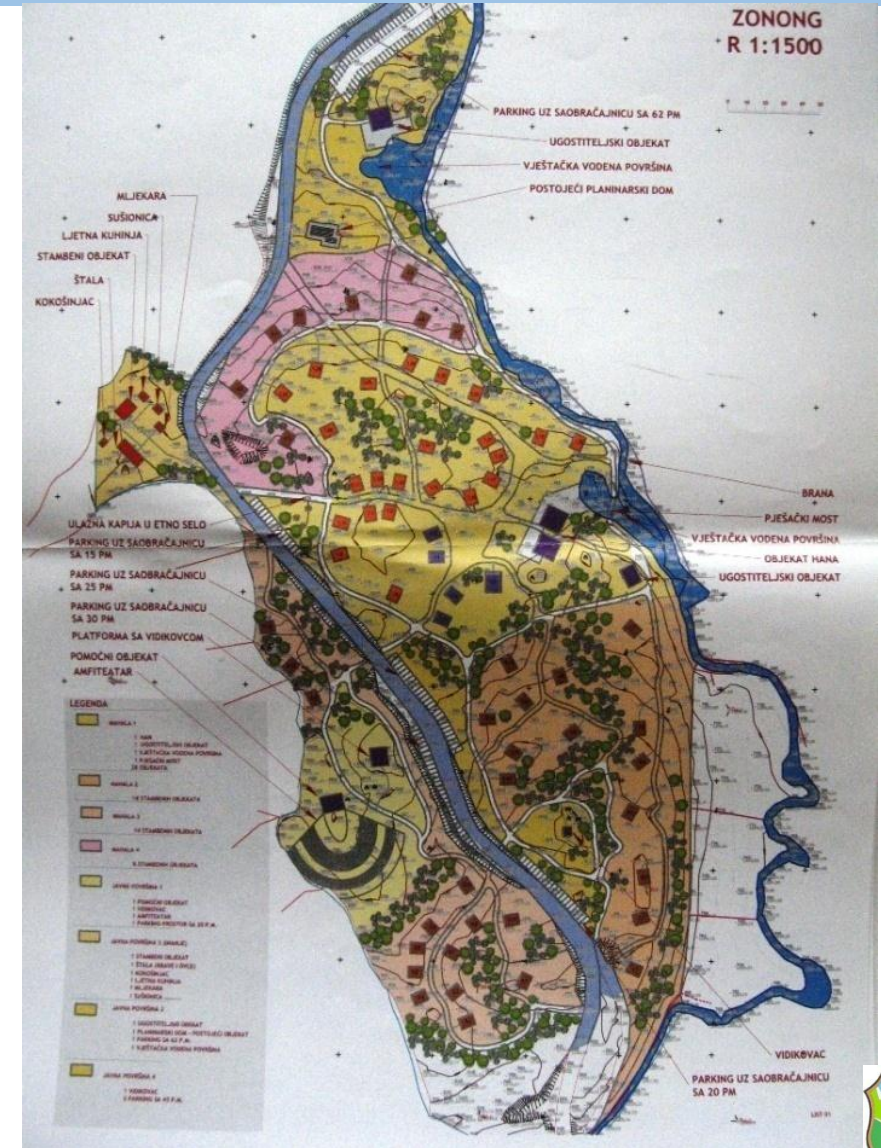




# ALLOTMENT PLAN TUŠILA

## ECO I ETHNO village Tušila

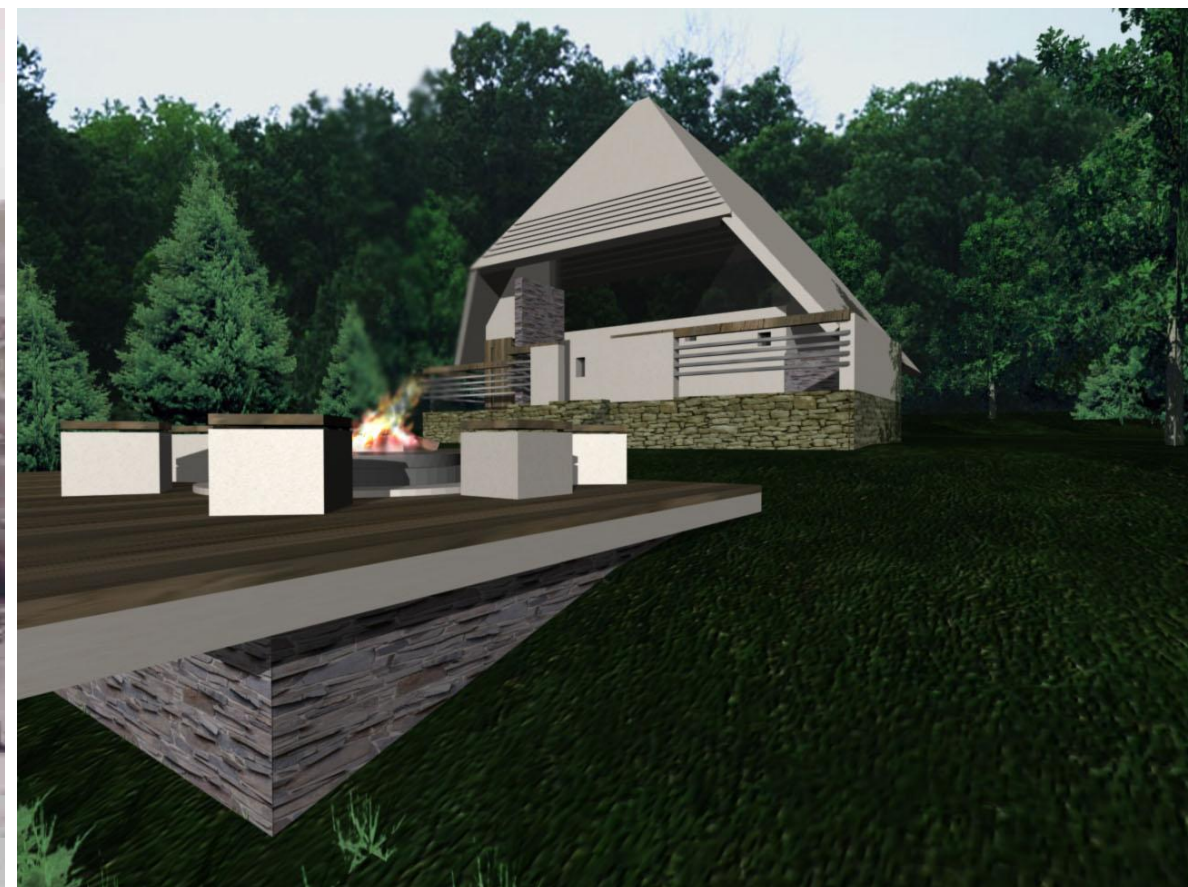
- Planned coverage area of 10,42 ha
- 102 marks for the construction of facilities for the holidays
- Social infrastructure areas
- Sport and Recreation areas
- Protected vegetation areas





# “ Katun “ resort – DUGO POLJE and VRELA

- Bring Decision on preparation of 2 allotment plans for Dugo polje and Vrela
- Responsibility of Sarajevo Canton Planning Institute,





## *Touristic reactivation of Treskavica – CONSTRUCTION OF MOUNTAINS AND WAR PATHS*

Together with the Ministry of Veterans' Affairs prepare projects for mountain and war paths





Thank you  
for your attention

